

Loughborough Students' Sailing & Windsurfing Club



Loughborough Students'
Sailing & Windsurfing Club



Introductions...



Loughborough Students'
Sailing & Windsurfing Club



Danny Ramsden Commodore





Loughborough Students'
Sailing & Windsurfing Club



Alex Willmore Vice Commadore





Loughborough Students'
Sailing & Windsurfing Club



Nikki Ellis

Treasurer





Loughborough Students'
Sailing & Windsurfing Club



Dave McCarthy

Secretary





Loughborough Students'
Sailing & Windsurfing Club



Lizzie Hill

Social Secretary





Loughborough Students'
Sailing & Windsurfing Club



Ali Lucas

Mens' Team Captain





Loughborough Students'
Sailing & Windsurfing Club



Emily Brown

Ladies' Team Captain





Loughborough Students'
Sailing & Windsurfing Club



Jenni Burt

Event Coordinator



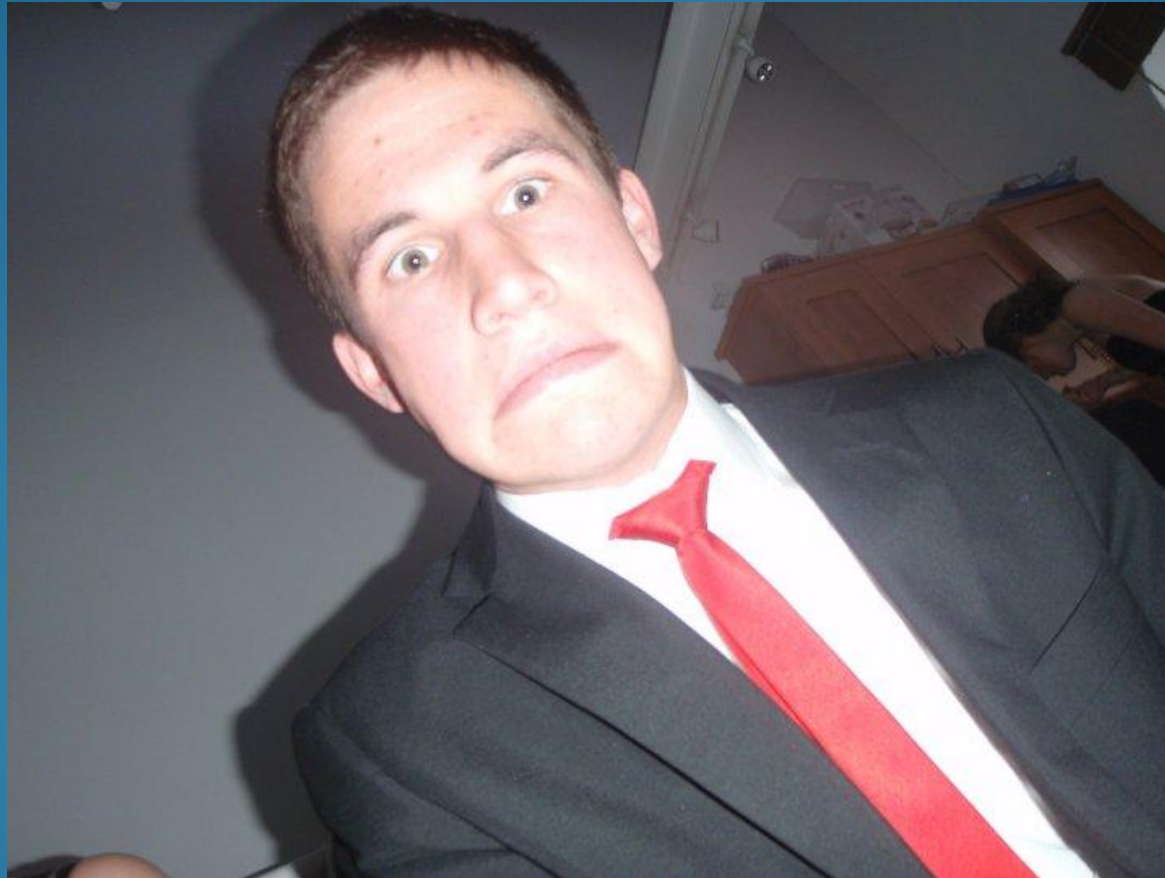


Loughborough Students'
Sailing & Windsurfing Club



Pete Goodyear

Bosun





Loughborough Students'
Sailing & Windsurfing Club



Simon Gadd

Bosun





Loughborough Students'
Sailing & Windsurfing Club



Charlie Wilson Yachting Captain





Loughborough Students'
Sailing & Windsurfing Club



Windsurfing Captain



Vote online later this week



Loughborough Students'
Sailing & Windsurfing Club



committee@lsswc.co.uk



Loughborough Students' Sailing & Windsurfing Club



[Home](#) [Get Involved](#) [Sailing](#) [Windsurfing](#) [Socials](#) [The Lemming](#) [Upcoming Events](#) [Location](#) [Committee](#)



Signups 2010

Dave McCarthy | 31st July 2010, 07:54 pm | Comments Off

Hello and welcome to Loughborough Students' Sailing & Windsurfing Club. Signups to the club for the academic year 2010/11 open in October and this year there are 80 membership places available.

If you are interested in joining the club this year please read the information on the [get involved](#) page. You can meet us at the Athletic Union Bazaar on the 9th & 10th October or attend our introductory meeting.

[Please click here to join our mailing list for news on signups this year.](#)



Club Fundraising

Alex Willmore | 22nd September 2010, 11:56 am | Comments Off

Guys and girls,

Would anyone be interested in raising money for the club? We need as much as possible this year to enable us to travel to events, maintain the boats etc.

Details below...



Upcoming Events

- 9 Oct
AU Bazaar
- 12 Oct
Welcome Meeting 7pm J104 EHB
- 13 Oct
Week 2 sailing sessions - 1st day

Recommend on Facebook

Like 22 people like this.

Links

- BUCS
- BUSA
- Loughborough Students' Union
- SWA

News Archives

- September 2010
- August 2010
- July 2010
- June 2010
- May 2010
- April 2010
- March 2010
- February 2010



Loughborough Students'
Sailing & Windsurfing Club



Weekly Sessions

Wednesday 1pm

Saturday 10am

Sunday 10am

Meet at the swimming pool car park

Bring a packed lunch



Loughborough Students'
Sailing & Windsurfing Club



Weekly Sessions

£2



Weekly Sessions

Your £2 is put in to a pot that is redistributed between all the drivers at the end of the month to pay for their fuel.

Please only bring your car if you've been asked to. You won't receive any fuel money if you've not been asked to drive.

Parking at the Students' Union car park costs £2.



Loughborough Students'
Sailing & Windsurfing Club



Sailing Events

Loughborough's Little Lemming	30 th Oct
BUCS Fleet Racing, Plymouth	6 th Nov
The Brummy Bender, Birmingham	19 th Nov
Loughborough Lemming	3 rd Dec
BUCS Team Racing	5 th Feb
Brunel Badger, Middlesex	T.B.C.
BUCS Yachting	28 th Mar
Southport 24hr	17 th Sept



Loughborough Students'
Sailing & Windsurfing Club



Windsurfing Events

Aussie Kiss

22nd Oct

Nottingham

6th Nov

Nationals

T.B.C.

Christmas Dahab trip

2nd Jan

Bristol

T.B.C.



Loughborough Students'
Sailing & Windsurfing Club



Socials

Regular Hey Ewe Socials!!

This Wednesday... Casual Hey Ewe social..meet in JC's
at 9

First welcome social: Pub Crawl then onto HEY EWE!!!
Keep Wednesday 20th free...theme to follow...



Loughborough Students'
Sailing & Windsurfing Club



RYA Dinghy Courses

The RYA National Sailing Scheme

Intensive 2 day course

- Level 1 - Start Sailing
- Level 2 - Basic Skills

First course 27th Nov (T.B.C.)

Last year cost £60



Stash

- Polo shirts
- Hoodies
- Henri Lloyd TPT jackets

Can be ordered from the Union website
www.lufbra.net/club/sail_wind

Details to follow....



Loughborough Students'
Sailing & Windsurfing Club



Kit

During colder months and at all events appropriate kit (wetsuit/drysuit) must be worn.

Buoyancy aids must be worn when on the water, some are available from the club.



Loughborough Students'
Sailing & Windsurfing Club



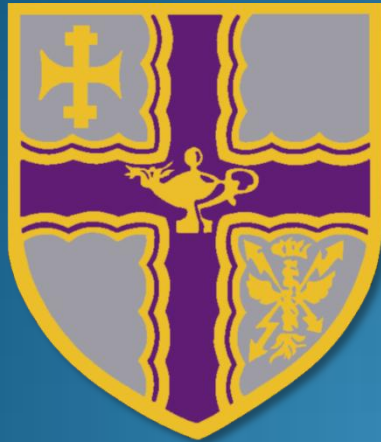
Membership

£62

+ £15 AU Affiliation

(if you join more than one club this only needs to be paid once)

www.lufbra.net/club/sail_wind



Loughborough Students' Sailing & Windsurfing Club